

C.M. Manufacturing

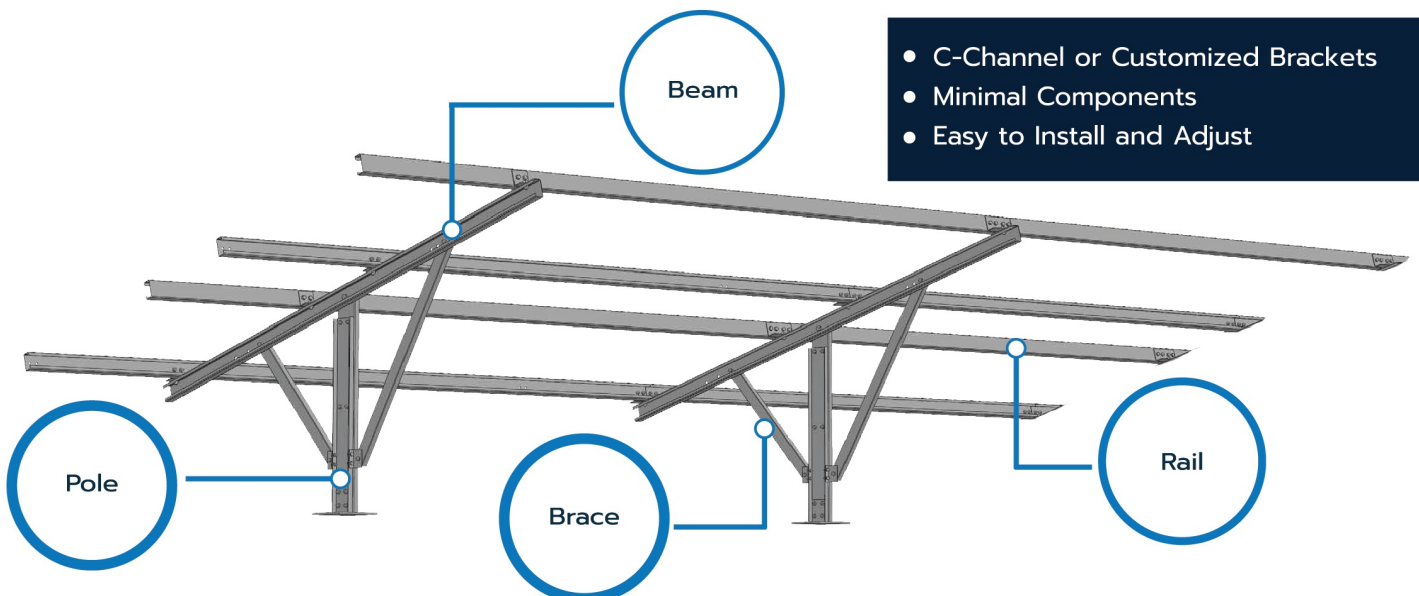
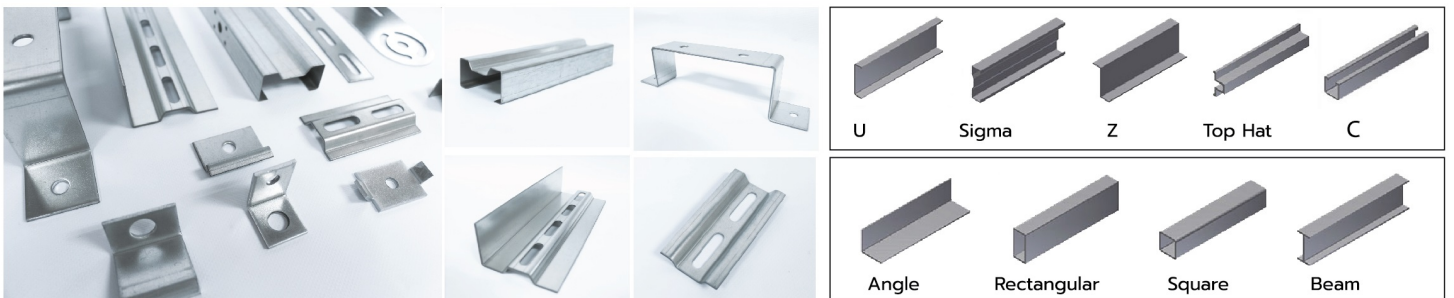
Thailand-Based Manufacturer
of Solar Mounting Structures

A leading manufacturer of solar mounting structures in Thailand, C.M. Manufacturing (CMM.) employs the use of highly corrosion-resistant coated steel in its solar mounting solutions, also including accessories for solar ground mounting, solar roofing, and floating solar mounting installations, also made from corrosion-resistant steel.

CMM. Mounting Products for Your SOLAR ENERGY Photovoltaic System

Solar Ground Mounting Structure

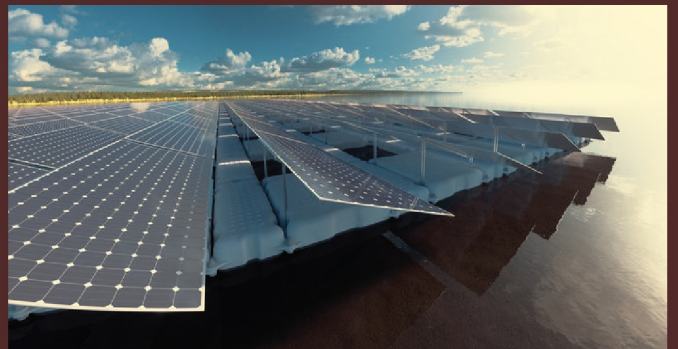
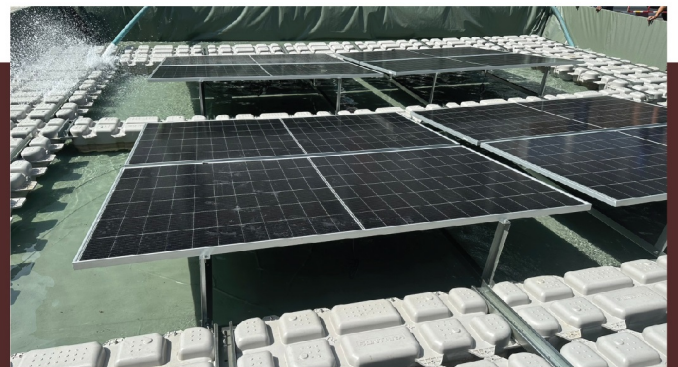
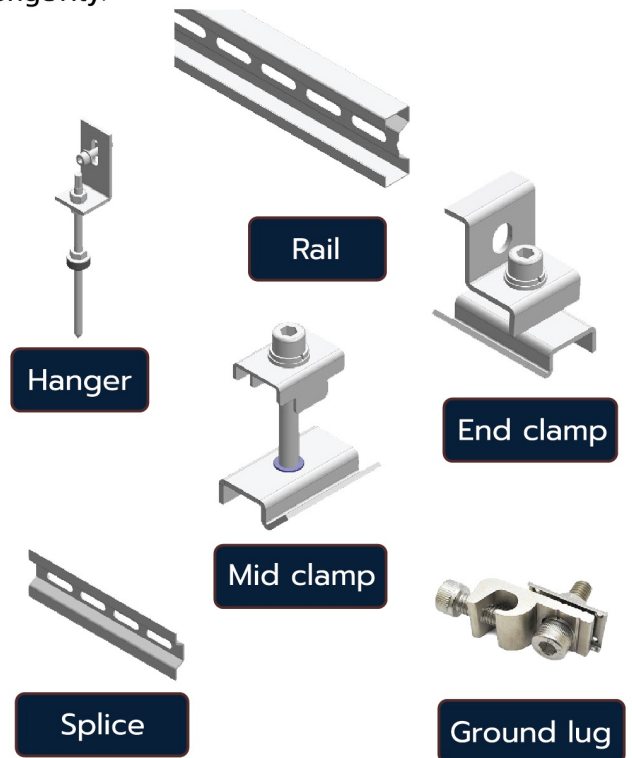
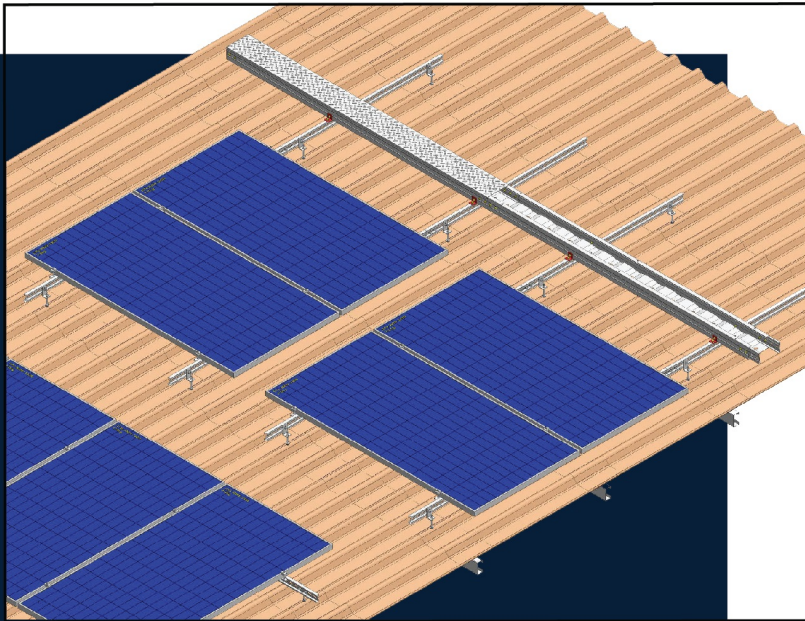
C-Channel or customized steel brackets for ground solar panel mounting with high corrosion resistance, suitable for a wide variety of terrains. Our products are constructed with as few components as possible, allowing for easy and efficient installation and adjustment.



- C-Channel or Customized Brackets
- Minimal Components
- Easy to Install and Adjust

Solar Rooftop Structure

Our steel rail structures, made with highly corrosion-resistant steel, are specially designed to support photovoltaic (PV) solar panels on rooftops, placing particular focus on simplicity and durability, allowing for effortless installation and adjustment as well as strength and longevity.



Floating Solar Mounting Structure

Our C-Channel structures are purposefully developed for the upholding of PV panels, redistributing their weight to floating structures. Built with high corrosion resistant steel our structures are suitable for seaside installations, ensuring longevity and durability even in harsh environments.



Solar Rooftop Structure

Solar light Pole



Cable tray



Cable Walkway



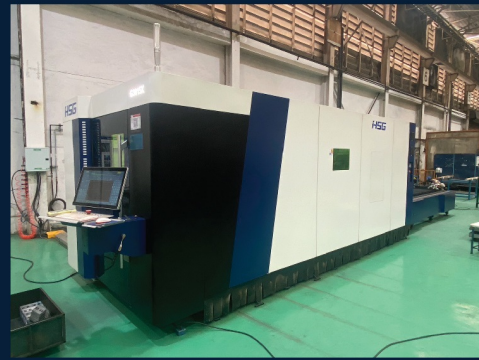
Bolts & Nut



Clamps Connectors



Factory & Machinery



Packing and Delivery



Material Options for Corrosion-Resistant Coated Steel

- Recommended for solar mounting structures
- Stocked in Thailand

Maker	Brand	Magnesium Alloy Chemical Composition	
		Mg (%)	Al (%)
Nippon Steel	ZEXEED	6.0	19.0
Nippon Steel	ZAM / ZAM-EX	3.0	6.0
Nippon Steel	SuperDyma	3.0	11.0
Posco	PosMac 3.0	3.0	3.0



For more information :

Contact Person: Ms. Tanya (General Manager)
Hotline: (66) 92-654-8728
Email: cminfo1@gmail.com

C.M. MANUFACTURING CO., LTD.

272 Moo 1 Suksawat Rd., Lamfapha,
Prasamutjedi, Samutprakarn 10290 THAILAND
Tel: (66) 02-815-2804-6

Website



www.cmm.co.th



www.thaicnst.com

Contact



LINE Official Account



WhatsApp

